



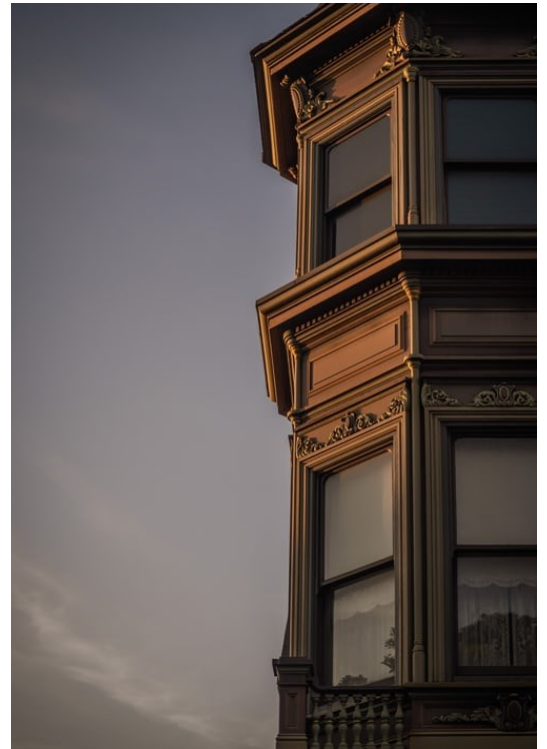
SURE-STONE lightweight profiles

SUREREND LTD.
FACADE PROFESSIONALS

Sure-stone bespoke lightweight profiles are one of the Most durable lightweight profiles on the market.

Some of the many benefits are:

- *Almost any shape achievable
- *High Compressive strength
- *Fire Resistant
- *Lightweight
- *Rotproof
- *Extremely durable
- *Made from Natural materials



A wide range of products can be made from Sure-stone including Cornices, Capping's, copes, Sills, Columns, Window and door surrounds ,motifs , Arches ,corbels, Dentils, Pilasters and much more.

Please ask one of our team for further details and standard range of profiles.

